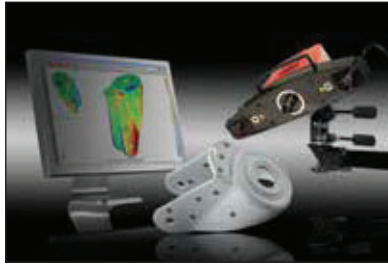
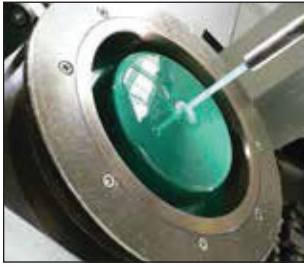


BUYER'S GUIDE TO CASTERS & WHEELS

All Casters Are Not Equal . . .



FEATURES & DESIGN

We offer a line of superior industrial casters that are *second to none*. Providing you with the safest, most reliable casters in the industry stems from having the highest quality in raw materials, design, and testing analysis. Our superior casters are rated by the following criteria and valued by the number of ★'s found next to their description. Rating criteria is below.

SUPERIOR CONSTRUCTION GUIDE

- ★★★★★ (5) = Superior Construction (includes 80% or more of the structural features below)
- ★★★★ (4) = Excellent Construction (includes 60% or more of the structural features below)
- ★★★ (3) = Exceptional Construction (includes 50% or more of the structural features below)
- ★★ (2) = Admirable Construction (includes 30% or more of the structural features below)
- ★ (1) = Good Construction (includes 25% or more of the structural features below)

SUPERIOR STRUCTURAL FEATURES INCLUDE

- Strategic Poly Bond: Sand blast and thermal cleaning of steel using a computer-controlled laser, automated adhesive applicator to ensure the same consistency every time, pre-heat mold and center (with more heat on the center to ensure poly bonds to the center first), and/or mechanically bonded together.
- Testing Analysis: May include raw material analysis, abrasion resistance, tread hardness, rotation, swivel of head, temperature resistance, rolling resistance, destructive tests, and/or locking systems (when applicable).
- State of the Art Injection Molding Machines: Equipped with linear robots or multi-lifts.
- Machined or Double Precision Steel Raceways: Offer some of the tightest performance in the industry.
- Bearing Dust Cover Seals or Thread Guards: Assist in protecting the bearings around the raceway (Dust Cover Seals) or the caster bearings (Thread Guard) from dust and debris that could impact the functionality and life of the bearings.
- High Quality Tread: Often provide longer lasting durability and better ergonomic performance than a standard tread of similar material.
- Kingpinless Design: A kingpin in a standard caster absorbs most of the abuse and tension received in a rigorous application. Over time, this can cause the kingpin to fail. Kingpinless casters provide a more even distribution of load offering stronger durability, especially in towing, heavy load, and shock absorbing applications.
- Non-Marking: Tread protects flooring from marks and scuffing.
- Anti-Corrosive Finish: Assists in protecting rigging from corrosion and rust that can inhibit the life of a caster.
- 100% of our Blickle® Casters go through a Debonding Press Test.
- 2-3 Year Warranty.
- Featured Cores:
 - A) Cast Iron or Steel: Provide better durability in high capacity applications.
 - B) Cast Aluminum: Lighter weight and offer maximum heat dissipation in high cycle applications.
 - C) Nylon or Polyolefin: Provide ideal vibration absorption. Especially useful in light capacity, low cycle applications.

SELECTING THE RIGHT MATERIAL

*Each material offers unique qualities for specific applications**

<p>Besthane®: Floor-preserving, non-marking, non-staining, highly abrasion resistant, and resistant to many aggressive substances. It is also water resistant, but not resistant to hot water, hot water vapor, humid air and aromatic solvents. Color brown. Maintenance-Free under standard conditions.</p>	<p>Besthane Soft®: High-quality-elastomer with a dynamic load capacity, non-marking, and non-staining. Also has a very low rolling resistance, good floor preservation, and high abrasion resistance. Color blue. Maintenance-Free under standard conditions.</p>
<p>Cast Iron: Wear-resistant and withstands abrasion. A relatively high floor pressure should be considered for pressure-sensitive floors. Hard tread rolls easily.</p>	<p>Extrathane®: A reaction-injected polyurethane-elastomer. It is floor-preserving, non-marking, non-staining, abrasion-resistant, and resistant to many chemicals. Non-resistant to hot water, hot water vapor, humid air, and aromatic solvents. Color light brown (butterscotch).</p>
<p>Glass Filled Nylon: Strong thermoplastic compound that resists hard impacts. Resistant to most chemicals, salts, solvents, and steam. Does not absorb water and ideal for many industrial and institutional applications. The wheel is non-marking.</p>	<p>Nylon: Impact-resistant nylon has very low rolling and swivel resistance. Provides a smooth roll on even floors and offers paramount chemical resistance to many aggressive substances.</p>
<p>Phenolic: Provides longer wear and handles high load capacities. Good for use in deep freeze temperatures. Hard tread rolls easily. Provides better floor protection and is quieter than steel wheels.</p>	<p>Polyolefin: Lightweight, resists most chemicals and oils, while providing exceptional impact resistance.</p>
<p>Polypropylene: A thermoplastic synthetic material. It is impact-resistant, non-marking, non-staining, corrosion resistant, and odorless. It also offers a low rolling resistance and does not absorb humidity. Color natural white.</p>	<p>Polyurethane: Offers paramount resistance to most oils, chemicals, solvents, and acids.</p>
<p>Rubber: Quiet-rolling, good for corrosive and damp environments. Provides shock absorption and rolls easily over small debris. Offers good floor protection and works well both in and outdoors.</p>	<p>Softthane®: High operational comfort due to an extremely thick elastic tread. Low-noise operation and rolling resistance. It is non-marking, while offering high abrasion and chemical resistance. Color green.</p>
<p>Surelastic Rubber: Characterized by a special rubber compound. This tread provides incredible floor-preserving qualities. It also offers a high load capacity, high operational comfort, and is resistant to many aggressive substances except oils. Color black.</p>	<p>Thermoplastic Polyurethane Rubber (TPR): Characterized by a non-marking, non-staining, good floor preservation. Also has low noise operation, rolling and swivel resistance. Resistant to chemicals, acids, bases, alcohol, salts, and steam. Color gray. Maintenance-free under standard conditions.</p>
<p>Thermoplastic Rubber-Elastomer (TPE): This tread provides a high operational comfort, low-noise operation, and good floor preservation. It is also non-marking. Color gray.</p>	<p>*ALL BENEFITS AND EXPECTATIONS STATED IN CATALOG ARE BASED UNDER STANDARD CONDITIONS.</p> <p>PLEASE CONTACT FACTORY FOR ADDITIONAL CASTER SIZES, MATERIALS AND TYPES.</p>